

Sheet Laminating Machines · The A-Series



STOCK Laminators provide the highest levels of quality and accuracy for the accurate mounting of high quality P.O.P. (P.O.S.) Displays, Puzzles and more.



Applying (offset) lithographic printed labels to corrugated or solid board sheets or similar products still represents the highest quality of (P.O.P.) P.O.S. packaging and displays. Our long-standing experience in developing productive and reliable machines suit your production for a high quality standard.

The A-model machine was developed for accurate and high quality (P.O.P.) P.O.S. packaging and displays of corrugated paper and solid board, game board, jigsaw puzzles, etc.

- **High quality also at high machine speeds by computerized front-lay-system and push- and pull-lays for lateral sheet adjustment for printed and carrier sheets.**

Tolerances: +/- 0.5 mm

- **short set up times**
- **up to 3,500 sheets/h with automatic machines**
- **easy handling**
- **minimum maintenance**
- **optimal glue application for flat products**
- **proven units for automation – modular design**



There are additional modules available to additionally automate the simple hand-fed basic model A-123:

- carrier sheet feeder model 4R – suction belt feeder for continuous sheet feeding
- model 4V – lead edge feeder for feeding the sheets from a pallet
- carrier sheet feeder model 4H – back edge feeder, not for single face
- pressure belt model 5
- printed (back edge) sheet feeder - model 6
- down-stacker model 7 – with non-stop
- down-stacker model 7A – without non-stop
- batch pile turner (flip-flop) model 8



Laminating Unit



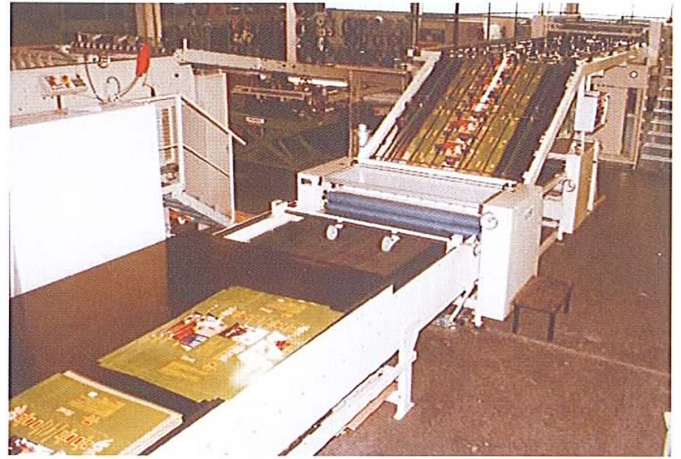
STOCK A Model: pull-lay

Use our experience to find a machine configuration corresponding to your needs.



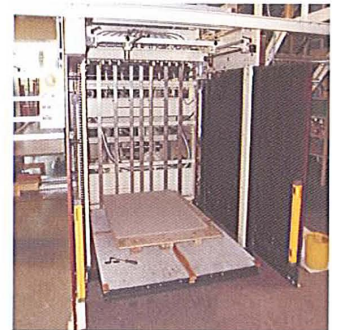
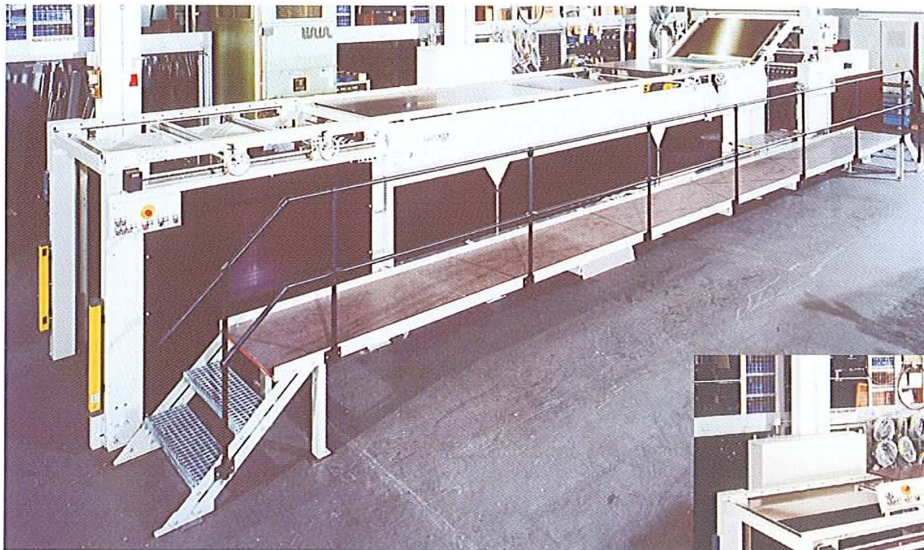
*Suction Belt Feeder
Model 4R*

Semi-automatic Laminator Type A-134R5



Automatic Laminator Type A-14R56

The modular design allows additional automation components to be added when production increases.

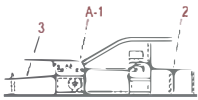


Front Edge Feeder Type 4V

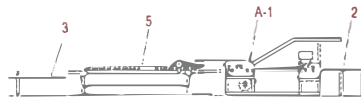
Semi-automatic Laminator Model A-14V57A includes a lead-edge top sheet feeder 4V, pressure belt 5 and a simple down-stacker 7A (without non-stop), manual feeding of the printed (top) sheets that requires only one (1) operator for use.



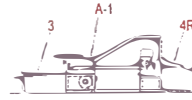
Type A-123



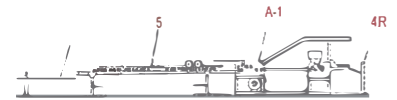
Type A-1235



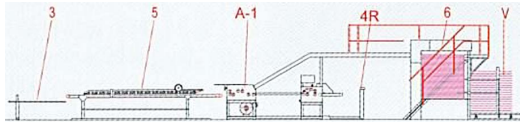
Type A-134R



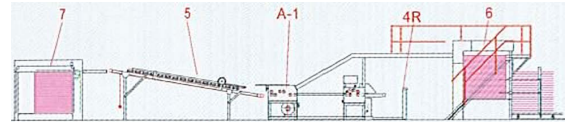
Type A-134R5



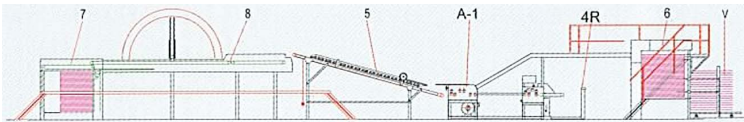
Type A-134R56



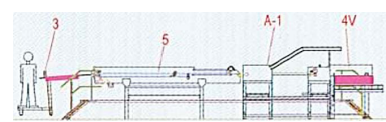
Type A-14R567



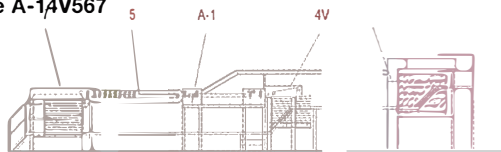
Type A-14R5678



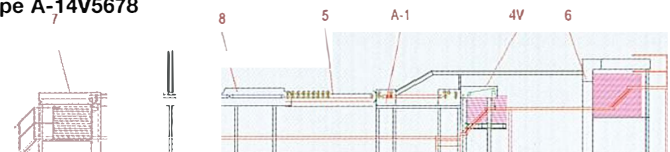
Type A-134V5



Type A-14V567



Type A-14V5678



Model Range

- A-1 = Laminator • 2 = Feeding Table • 3 = Take-off Table
- 4R = Suction Belt Feeder • 4V = Front Edge Feeder • 5 = Pressure Band
- 6 = Printed Sheet Feeder • 7 = Down-Stacker • 8 = Batch Pile Turner (Flip-Flop) • V = Preloader

TECHNICAL DATA

Working Width	1250 mm (49") / 1500 mm (59") / 1650 mm (65")	
Sheet Length	Up to 2,050 mm (80.5") possible	
Material	Carrier sheet from approx. 0.4 mm (.016") up to 7 mm (.28") printed sheet from approx. 100 up to 800 gsm	
Tolerances	+/- 0.5 mm / +/- .02"	
Output*	Hand-fed Machine Model A-123, A-1235	Up to 1200 sheets
	Semi-automatic Machine Model A-134(R/V), A-134R(V)5	Up to 1800 sheets
	Automatic Machine Model A-134(R/V/H)6, A-134(R/V/H)56	Up to 3500 sheets

* Depending upon sheet size, quality of material and operator skill.
 • Design is subject to change without notice.

- Laminating Machines for high speed
- Laminating Machines for high laminating accuracy
- Spot Labelling Machines
- Gluing Machines
- Pattern / Display Gluing Machines
- Sheet Feeders
- Non-stop Down-Stackers
- Pressure Belts
- Rotary Knives / Sheeters
- Easel-Mounting Machines
- Special Machines

OUR DELIVERY PROGRAM



For more information on the STOCK product line, contact the firm's North American Agent, Young Shin USA Limited:

Phillip Mack, Vice President, Young Shin USA Limited
 P: 847-598-3611 F: 847-598-3612
 E: info@youngshinusa.com www.youngshinusa.com

